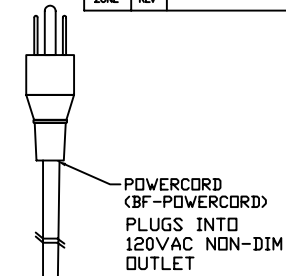


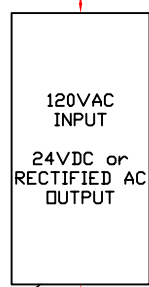
ZONE		REV	DESCRIPTION	DATE	APPROVED
------	--	-----	-------------	------	----------



CONNECTION OF PWRCRD TO POWER SUPPLY:  
 GREEN = FIELD GROUND (F.G.)  
 WHITE = NEUTRAL (N)  
 BLACK = HOT (L OR H)

WATTAGE OF POWER SUPPLY AND # OF LEDS WILL DETERMINE # OF STRIP PER POWER SUPPLY.

WATTAGE	# OF LSS3001
50	8
60	10
100	16
150	28
300	50
500	83



POWER SUPPLY (BF-PS)

CONNECTION OF CABL2-FBE TO POWER SUPPLY:  
 + = GREEN/RED WIRE = +24VDC (+24V OR +V)  
 - = WHITE/BLACK/BLUE WIRE = REFERENCE (-V OR COM)

HOME RUN CABLE (BF-CABL2-FBE-LS)

ONLY 27FT OF LSS MAY BE CONNECTED TO A SINGLE HOME RUN CABLE. THIS MAY BE A COMBINATION OF 12', 8', OR 6' AS LONG AS THE OVERALL LENGTH DOES NOT EXCEED 27FT.

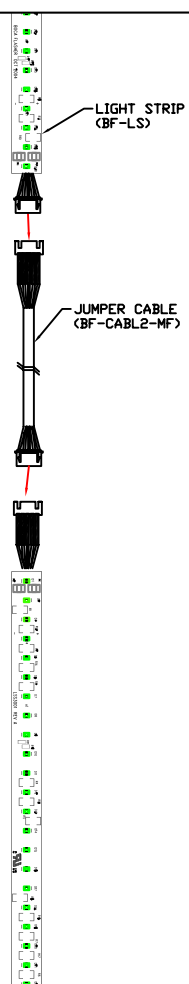
MULTIPLE HOME RUN CABLES MAY BE USED PER POWER SUPPLY. # OF LSS IS LIMITED TO THE WATTAGE ON THE POWER SUPPLY.

LIGHT STRIP (BF-LSS10XX)


LSS PRODUCT IS USUALLY SHIPPED IN POLYCARBONATE TUBE. LENGTH OF TUBE VARIES FROM 6.5' - 60'. TUBE CAN BE LENGTHENED USING PLASTIC COUPLERS.

TUBE IS PLACED IN DESIRED LOCATION USING PLASTIC CLIPS.

IF NO TUBE IS UTILIZED PLACE STRIP IN ELECTRICALLY INSULATED AREA.



NOTE: THIS DOCUMENT IS CONFIDENTIAL AND PROTECTED BY COPYRIGHTS OF BOCA FLASHER. BOCA FLASHER DOES NOT TAKE ANY RESPONSIBILITY FOR DAMAGE INCURRED IF MODIFICATIONS ARE MADE TO THE DESIGN WITHOUT THE DESIGNER'S WRITTEN CONSENT.

 552 N.W. 77TH ST. BOCA RATON, FL 33487 (561) 989-5338	<b>CONNECTIONS FOR LSS W/          POWER SUPPLY</b>		
	FILE NAME LSS, PS	TOLERANCE	N/A
	DRAWN BY	LAURA GLASER	12/22/04
	DESIGN BY	LAURA GLASER	12/22/04
	APPROVAL BY	STEVE MCKINNEY	12/22/04
SCALE 1:4	SHEET 1 OF 1	REV A	